

Wiegenlied (Cradle Song)

J. Brahms

2. Stimme hinzugefügt von Hans Buhrman

♩ = 70

ALTO



Gu - ten A - bend, gut Nacht, mit Ro - sen be -
 Gu - ten A - bend, gut Nacht, von Eng - lein be -
 Sleep, you lit - tle one, sleep, Fond vi - gil I
 Ma - ny an - gels a - bide all night by your

TENOR



PIANO

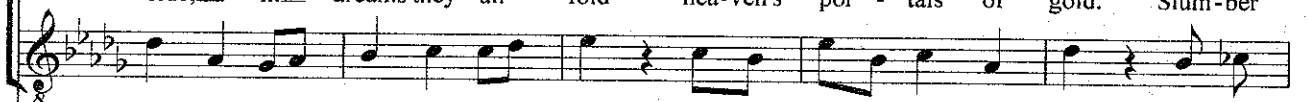


A.



dacht mit Näg - lein be - steckt schlupf un - ter die Deck. Mor - gen
 wacht, die zei - gen im Traum dir Christ - kind - leins Baum: Schlaf nun
 keep Lie warm in your nest in moon - beams' calm rest. When the
 side, in dreams they un - fold hea - ven's por - tals of gold. Slum - ber

T.



PNO.

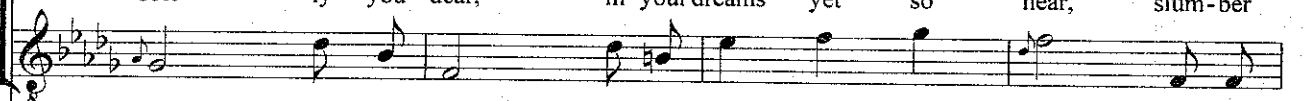


A.



früh, wenn Gott will wirst du wie - der ge - weckt, mor - gen
 se - lig und süß, schau im Traum 's Pa - ra - dies, schlaf nun
 mor - ning's lights rise, you are giv - en bright skies, when the
 soft - ly you dear, in your dreams yet so near, slum - ber

T.



PNO.



15

A.

Musical notation for the Soprano part, starting with a treble clef and a key signature of three flats (B-flat, E-flat, A-flat). The melody consists of quarter and eighth notes, ending with a fermata over a whole note.

früh, wenn Gott will, wirst du wie - der ge - weckt.
se - lig und süß, schau im Traum 's Pa - ra - dies.
mor - ning's lights rise, you will live in my skies.
soft - ly, you dear, in your dreams yet so near.

T.

Musical notation for the Tenor part, starting with a treble clef and a key signature of three flats. The melody consists of quarter and eighth notes, ending with a fermata over a whole note.

PNO.

Musical notation for the piano accompaniment, consisting of two staves (treble and bass clefs) with a key signature of three flats. The right hand plays chords and moving lines, while the left hand plays a simple bass line.